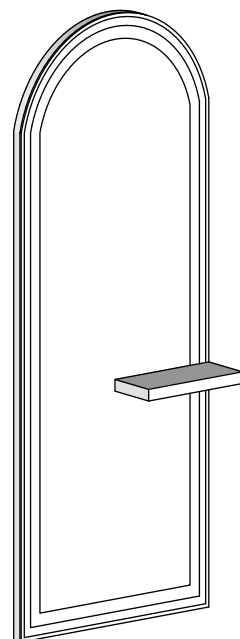


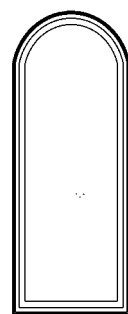


Mesa LED Frontlit Arch Mirror with Shelf

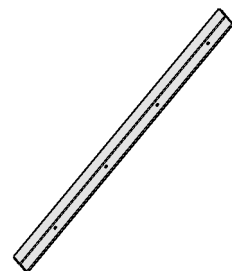
Model: MM-LED-ARCH-SHELF



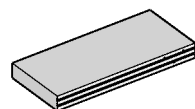
PARTS LIST



Mirror



Mounting Bracket
x1



Shelf



Screw
x7



Drywall Anchor
x4



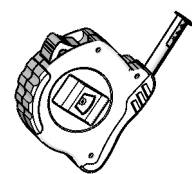
Wire Connector
x3

Open all boxes to check for parts before beginning assembly.

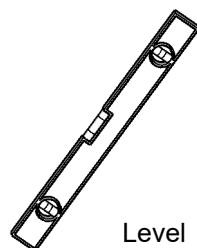
TOOLS REQUIRED



Hammer



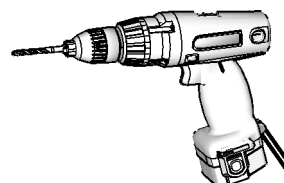
Tape



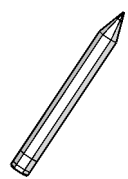
Level



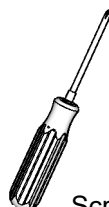
1/4" Drill Bit



Drill



Pencil



Screw Driver

SAFETY INSTRUCTIONS

Read instructions completely before installing the mirror.

⚠ WARNING:

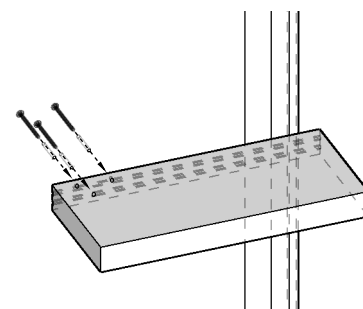
- If the colors of the electrical supply wires are different than what is referred to in the instructions below, a professional electrician should determine proper wiring. An electrical mirror must be wired to a 20 amp GFCI (Ground Fault Circuit Interruptor) when used in a bathroom and all other locations required by the National Electrical Code.

CAUTION:

- When drilling, wear suitable eye protection. Be cautious of hidden cables or pipes.
- When cleaning, be cautious of using harsh cleaners or abrasive materials on surfaces.
- Rated for damp locations. Not suitable for outdoor use.
- Be sure the outlet box is properly grounded or that a green or bare (ground) wire is present.
- You may need a second person to support the mirror during installation.

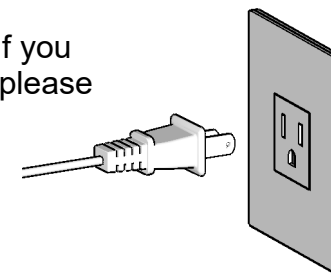
Assembly instructions:

1. Attach the shelf to the mirror with screws.

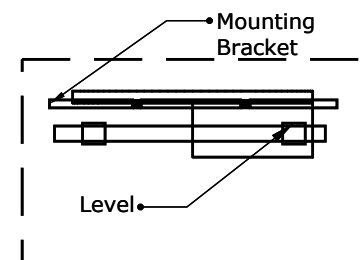


1 7

7. Plug cord into power outlet. If you prefer a hardwired installation, please skip this step and see step #8

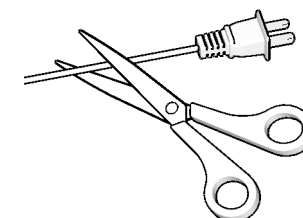


2. Measure and note the distance from the center of the mounting bracket. Determine the location of the mirror and while using a level, mark the hole locations on the wall.

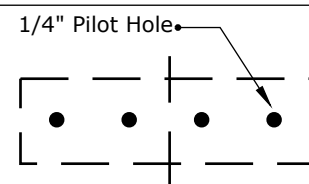


2 8

8. A licensed electrician should perform this step. Using wire cutters, remove the plug off of the power cord and connect the wire with existing power in the junction box. Wiring diagram is shown in the following step.

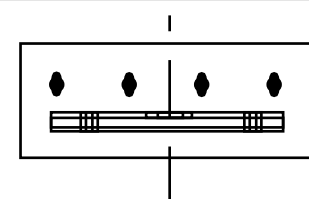


3. Use 0.25" diameter drill bit (not included) to drill the pilot holes for the drywall anchors.



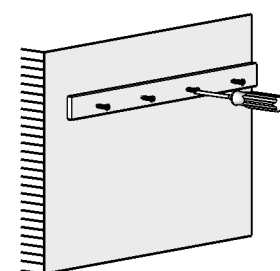
3

4. Use a hammer (not included) to tap the drywall anchors into the pilot holes.



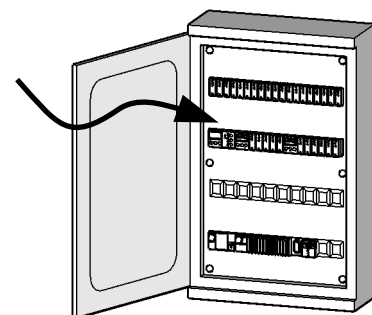
4

5. Attach the mounting bracket to the wall with screws.



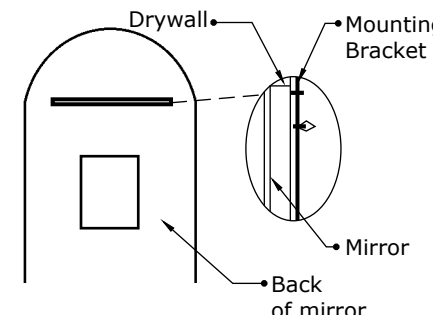
5 9

6. Turn off circuit breaker and wall switch to the mirror. DANGER: Failure to disconnect power supply prior to installation may result in serious injury or death.



6 10

10. Lift the mirror onto the mounting bracket. Note: Ensure the bracket is installed properly so that the back of the mirror interlocks with the mounting bracket on the wall.



OPERATIONAL INSTRUCTION TOUCH OF SWITCHES

Power on/off the lights: Click the touch button to turn on/off the lights. To dim the lights: Press and hold to dim the lights from 10%-100% brightness.

Designed by Minerva Beauty